



ESCORTS
CONSTRUCTION EQUIPMENT

COMPLETE CONSTRUCTION EQUIPMENT RANGE



BACKHOE LOADERS | CRANES | COMPACTORS

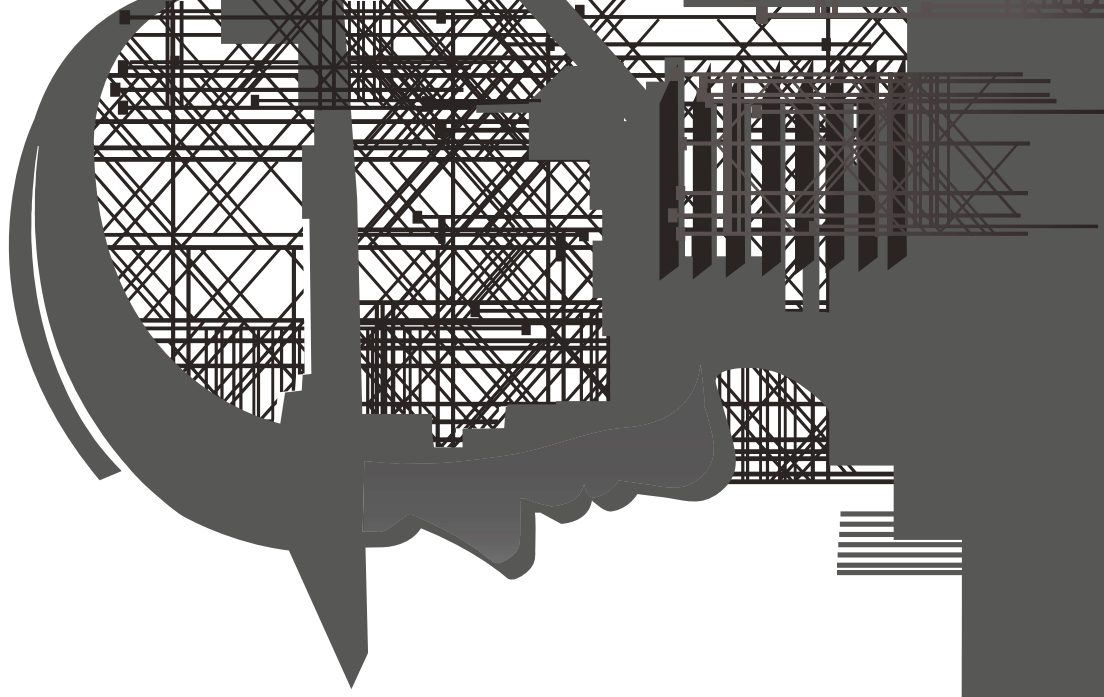
ABOUT ESCORTS CE

Escorts Construction Equipment (ECE) is a subsidiary of 7 decades old Escorts Group – India's leading engineering conglomerate engaged in manufacturing of agriculture tractors, construction equipment's & railway equipment's. ECE, started its operation in 1971 through manufacturing of Material Handling Equipment, Construction & Mining equipment and it is a world's largest manufacturer of Pick-n-Carry Cranes. The company has introduced the concept of Pick 'n' Carry hydraulic mobile cranes in the 1970's in India and continues to be the world's largest manufacturer of these cranes.

Besides Pick 'n' Carry cranes we are also manufacturing Backhoe Loader's, Vibratory Soil Compactors and Double-Drum Tandem Roller's. Powered by in-house R&D center and collaboration with Global Technology leaders, ECE is committed in contributing towards Global growth story and bringing quality change in the lives of people.



ABOUT DEALER



HYDRA CRANE

SPECIFICATIONS



MODEL	Hydra 14
Lifting capacity	14T @ 1.6m radius
Max. Vertical height	13 mtrs (42 ft.) / 15 mtrs (49 ft.)
Engine	ESCORTS 49.5 HP @ 2200 RPM, 4 Cylinder, Water-cooled Diesel Engine
Transmission	Constant Mesh gearbox coupled with 8 Forward & 2 Reverse speeds with High/Low selector lever.
Creep Speed	1.9 km/hr @ rated RPM
Telescopic Boom	3 Part/ 4 Part Slotted boom
Tyres	FRONT: 11.00 x 20 - 16PR (4 Nos.) REAR: 13.00 x 24 - 12PR (2 Nos.).
Hoist Mechanism	Hydraulic Winch with 6 Falls (Winch capacity of 12T), Rope Dia of 13mm
Operating Weight	11,100 Kg
Safety System	<ul style="list-style-type: none"> • Rope compensation system for auto levelling of loads • Overload audio warning system • Safety counter balance valve for Hose protection failure • Safety brakes on Hoist • Lift cylinder guard for protection
Optional Accessories	<ul style="list-style-type: none"> • Fly jib, • Fire Extinguisher, • Spark Arrestor, • Safe load indicator, • Over hoist & Overload cut-off • Heavy duty tyres on Rear wheels

MODEL	Hydra 15
Lifting capacity	15T @ 1.6m radius
Max. Vertical height	15 mtrs (49 ft.) / 17 mtrs (55 ft.) with fly jib
Engine	ESCORTS 49.5 HP @ 2200 RPM, 4 Cylinder, Water-cooled Diesel Engine
Transmission	Constant Mesh gearbox coupled with 8 Forward & 2 Reverse speeds with High/Low selector lever.
Creep Speed	1.9 km/hr @ rated RPM
Telescopic Boom	4 Part Slotted boom
Tyres	FRONT: 11.00 x 20 - 16PR (4 Nos.) REAR: 13.00 x 24 - 12PR (2 Nos.)
Hoist Mechanism	Hydraulic Winch with 6 Falls, Rope Dia of 13mm
Operating Weight	11,600 Kg
Safety System	<ul style="list-style-type: none"> • Rope compensation system for auto levelling of loads • Overload audio warning system • Safety counter balance valve for Hose protection failure • Safety brakes on Hoist • Lift cylinder guard for protection
Optional Accessories	<ul style="list-style-type: none"> • Fly jib, • Fire Extinguisher, • Spark Arrestor, • Safe load indicator, • Over hoist & Overload cut-off • Heavy duty tyres on Rear wheels



HYDRA CRANE

SPECIFICATIONS

MODEL	Hydra 1665
Lifting capacity	16T @ 1.5m radius
Max. Vertical height	19 mtrs. (62 ft.) / 21 mtrs. (68 ft.) with fly jib
Engine	Kirloskar 4R 1040 76HP @ 2200RPM Turbocharged, 4 cylinder Water cooled, Diesel Engine
Transmission	Heavy duty CARRARO Synchro shuttle transmission with Torque converter, Synchromesh gearbox coupled with straight drive axle, 4 Forward & 4 Reverse speeds with electrically operated Forward & Reverse shuttle, provided on-the-go shifting in all gears.
Creep Speed	1.7 km/hr @ rated RPM
Telescopic Boom	4 Part Slotted boom
Tyres	FRONT: 11.00 x 20 - 16PR (4 Nos.) REAR: 14.00 x 25 - 20PR (2 Nos.)
Hoist Mechanism	Hydraulic Winch with 6 Falls (Winch capacity of 12T), Rope Dia of 13mm
Operating Weight	13,710 Kg
Safety System	<ul style="list-style-type: none"> • Rope compensation system for auto levelling of loads • Overload audio warning system • Safety counter balance valve for Hose protection failure, • Safety brakes on Hoist • Lift cylinder guard for protection
Optional Accessories	<ul style="list-style-type: none"> • Fly jib, • Fire Extinguisher, • Spark Arrestor, • Safe load indicator, • Over hoist & Overload cut-off, • Heavy duty tyres on Rear wheels



ALL IMAGES ARE LOW RES

NEXT GENERATION SAFE CRANE: F-SERIES

SPECIFICATIONS



MODEL	Escorts- F-15 (4WD)
Lifting capacity	14Ton @ 1.50 m radius
Max. Vertical height	18.2 mtrs. (60 ft.) / 21 mtrs. (69 ft.) with fly jib
Engine	VOLVO Eicher' make 101HP@2400 RPM, Turbo charged Water cooled Diesel Engine
Transmission	Synchromesh Transmission Gearbox with Auxiliary gearbox with 10 forward & 2 reverse speeds
Creep Speed	1.3 km/hr. @ rated RPM
Telescopic Boom	4 Part Slotted Boom, 3 Part Hydraulically Powered & Fully Synchronized, 4th Part Power Extended & Manually Pinned for Safety
Tyres	8 nos - 11 x 20 - 16PR
Hoist Mechanism	Hydraulically operated with 4 falls built-in safety brakes
Operating Weight	15,820 Kg
Safety System & Standard Accessories	<ul style="list-style-type: none"> • Mobile Charger • Rear view camera with LCD • Rope compensation snatch block • Tyre Guard • Heavy duty winch with built in safety brakes • Outrigger
Optional Accessories	<ul style="list-style-type: none"> • FM Radio • 2.6m Fly jib, • Safe load indicator with hydraulic cut-off (SLI) • Dragging winch

MODEL	Escorts F-17 (4WD)
Lifting capacity	17Ton @ 1.50 m radius
Max. Vertical height	18.2 mtrs. (60 ft.) / 21 mtrs. (69 ft.) with fly jib
Engine	VOLVO Eicher' make 101HP@2400 RPM, Turbo charged Water cooled Diesel Engine
Transmission	Synchromesh Transmission Gearbox with Auxiliary gearbox with 10 forward & 2 reverse speeds
Creep Speed	1.3 km/hr. @ rated RPM
Telescopic Boom	4 Part Slotted Boom, 3 Part Hydraulically Powered & fully synchronized, 4th Part Power Extended & Manually Pinned for Safety
Tyres	8 nos - 11 x 20 - 16PR
Hoist Mechanism	Hydraulically operated with 6 falls built-in safety brakes
Operating Weight	16,890 Kg
Safety System & Standard Accessories	<ul style="list-style-type: none"> • Mobile Charger • Rear view camera with LCD • Rope compensation snatch block • Tyre Guard • Heavy duty winch with built in safety brakes • Outrigger
Optional Accessories	<ul style="list-style-type: none"> • FM Radio • 2.6m Fly jib, • Safe load indicator with hydraulic cut-off (SLI) • Dragging winch



NEXT GENERATION SAFE CRANE: F-SERIES

SPECIFICATIONS



MODEL	Escorts F-20 (4WD)	
Lifting capacity	20Ton @ 1.50 m radius	
Max. Vertical height	19.5 mtrs. (64 ft.)	
Engine	VOLVO Eicher' make 101HP@2400 RPM, Turbo charged Water cooled Diesel Engine	
Transmission	Synchromesh Transmission Gearbox with Auxiliary Gearbox with 10 forward & 2 reverse Speeds	
Creep Speed	1.3 km/hr. @ rated RPM	
Telescopic Boom	4 Part Boom,3 Hydraulically Powered & Fully Synchronized. 4th part power extended & manually pinned for safety (Non-Slotted)	
Tyres	8 nos. – 12x24 – 20PR	
Hoist Mechanism	<ul style="list-style-type: none"> • 15T Hydraulically operated winch with 6 falls snatch block • Built-in safety brakes 	
Operating Weight	18,565 kg	
Safety System & Standard Accessories	<ul style="list-style-type: none"> • Rear view camera with LCD • Rope compensation snatch block • Tyre Guard • Equipment monitoring system (Telematics) • Front outriggers • Robust high strength light weight C-box chassis with lower CG position and better stability • FM Radio and mobile charger 	
Optional Accessories	<ul style="list-style-type: none"> • Safe load indicator with hydraulic cut-off (SLI) • Fire Extinguisher 	



ALL IMAGES ARE LOW RES

NEXT GENERATION SAFE CRANE: TRX-SERIES

SPECIFICATIONS

MODEL	Escorts TRX-15 (4WD)
Lifting capacity	15Ton @ 1.50 m radius
Max. Vertical height	18.2 mtrs (60 ft.) / 21 mtrs. (69 ft.) with fly jib
Engine	TATA Motors 76 Ps @ 2200RPM, Water cooled Turbocharged, Diesel engine
Transmission	Synchromesh Transmission Gearbox of TATA MOTORS with Auxiliary Gearbox with 10 Forward & 2 reverse speeds.
Creep Speed	1.3 Km @ rated RPM
Telescopic Boom	4 Part Slotted Boom, 3 Part Hydraulically Powered & Fully Synchronized. 4th Part Power Extended & Manually Pinned for Safety
Tyres	8 nos - 11 x 20 - 16PR
Hoist Mechanism	Hydraulically operated winch with max line speed 50m/min with built-in safety brakes
Operating Weight	16,710 (4WD)
Safety System & Standard Accessories	<ul style="list-style-type: none"> • Outriggers • Tyre Guard • Revers camera
Optional Accessories	<ul style="list-style-type: none"> • Fly jib 2.6m Length • Safe Load indicator with Hydraulic cut-off (SLI) • Beacon light • Fire extinguisher • Helper seat with platform



MODEL	Escorts TRX 2319 (2WD)
Lifting capacity	23Ton @ 1.50 m radius
Max. Vertical height	19.2 mtrs. (62.9 ft.) / 22 mtrs. (72 ft.) with fly jib
Engine	VOLVO Eicher' make 137HP @2200 RPM Turbo charged, Water cooled Diesel Engine
Transmission	Synchromesh Transmission Gearbox with Auxiliary gearbox with 12 forward & 2 reverse speeds
Creep Speed	1.3 kmph @ rated RPM
Telescopic Boom	4 Part boom,3 part hydraulically powered & fully synchronized, 4th part power extended & manually pinned for safety (Non-Slotted)
Tyres	Front: 12.00 x 24 - 20 PR (4 nos.) Rear: 17.5.00 x 25 - 20 PR (2 nos.)
Hoist Mechanism	Hydraulically operated winch with max line speed 58m/min with built-in safety brakes
Operating Weight	17,685 Kg (2WD)
Safety System & Standard Accessories	<ul style="list-style-type: none"> • Safe Load Indicator with hydraulic cut-off (SLI) • Safety brakes on hoist • Hose protection failure device • Rope compensation snatch block • Rear view camera with LCD • Fly jib 2.6m Length • Tyre Guard
Optional Accessories	<ul style="list-style-type: none"> • Equipment Monitoring System • Fire extinguisher

BACKHOE LOADERS



SPECIFICATIONS

MODEL	Digmax 3E	Digmax 3E-P
Engine Power	90HP (67 KW)	100HP (75 KW)
Engine Make	Kirloskar 4R11040TA	Perkins 11104D-44TA
Drive	4WD	
Dump Height	3 mtr.	
Backhoe Break-out force	6,018 kgf	
Loader Bucket size	1.2 cum	
Backhoe Bucket size	0.26cum (standard) (0.09 - 0.32cum optional available)	
Operating Weight	8,400 kg	
Tyre size	Front (Std): 12.5/80-18, 12PR Rear (Std): 16.9 x 28-12PR	
Optional accessories	<ul style="list-style-type: none"> • A.C/ Heater, HVAC • Multi-purpose (6-in-1) loader bucket • Rock breaker piping/ circuit • Extendable dipper (Telescopic arm) • Ripper tooth • Heavy duty tyres: 14 x 25 – 20 PR • Coal bucket – 1.5 cum • Optical fibre trench bucket (300 mm) • Mining kit 	

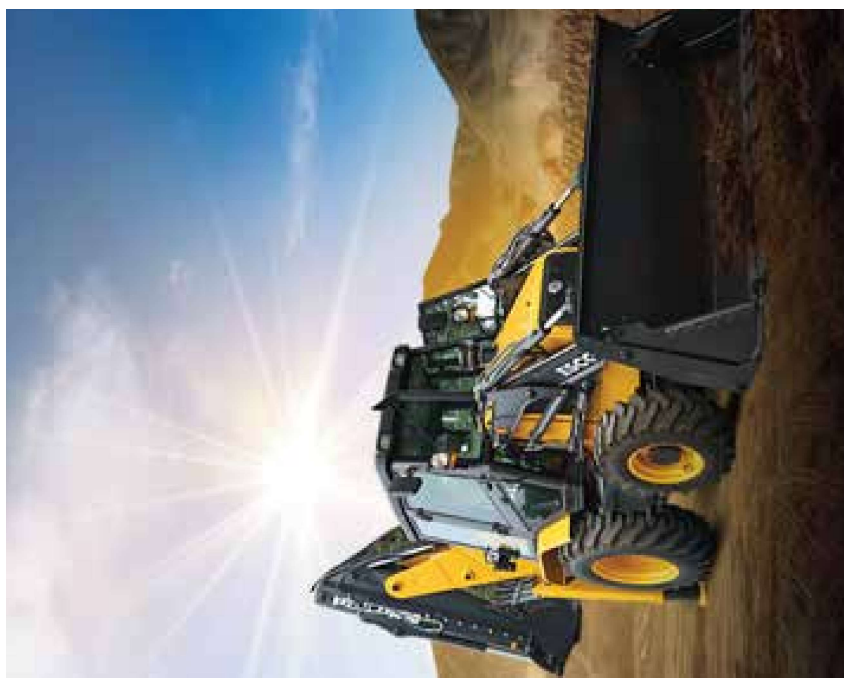
Features

- Fuel efficient and faster cycle time of operation
- 4th Generation – Spacious, ergonomic, comfortable cabin
- Standard offering of Telematics – Equipment monitoring system
- Lowest operation & maintenance cost

MODEL	Digmax II	Digmax II-P
Engine Power	90HP (67 KW)	100HP (75 KW)
Engine Make	Kirloskar 4R11040TA	Perkins 11104D-44TA
Drive	4WD	
Dump Height	3 mtr.	
Backhoe Break-out force	6,018 kgf	
Loader Bucket size	1.2 cum	
Backhoe Bucket size	0.26cum (standard) (0.09 - 0.32cum optional available)	
Operating Weight	8,400 kg	
Tyre size	Front (Std): 12.5/80-18, 12PR Rear (Std): 16.9 x 28-12PR	
Optional accessories	<ul style="list-style-type: none"> • A.C/ Heater, HVAC • Multi-purpose (6-in-1) loader bucket • Rock breaker piping/ circuit • Extendable dipper (Telescopic arm) • Ripper tooth • Heavy duty tyres: 14 x 25 – 20 PR • Coal bucket – 1.5 cum • Optical fibre trench bucket (300 mm) • Mining kit 	

Features

- Fuel efficient
- Standard offering of Telematics – Equipment monitoring system
- Easy maintenance & higher productivity
- *2WD option available with 76HP engine



DOUBLE DRUM TANDEM ROLLERS

SPECIFICATIONS

MODEL	EC 3664 (Mini Tandem - 3Ton)
Engine	Escorts 47HP@2300 RPM Water cooled, 3 cylinder Diesel Engine
Operating weight	3,300 Kg
Maximum Gradeability	35% with vibration
Static linear Load (Front Rear)	14.2 Kg/cm 13.3 Kg/cm
Working speed	0 - 4 kmph
Travelling speed	0 - 12 kmph
Frequency (Low High)	55 Hz 64 Hz
Nominal Amplitude	0.6 mm
Safety System & Standard accessories	<ul style="list-style-type: none"> • Neutral Start switch • Emergency Stop switch • Reverse Alarm • Air Filter, Hydraulic filter clog indicator • Low Engine Oil pressure indicator • Starter safety relay • Sprinkler indicator

Features

- Suited for shoulder compaction with low turning radius of 4100 mm
- Highest static linear load in its class
- Low operating and maintenance cost



MODEL	HD 85 (Tandem Roller - 9Ton)
Engine	Escorts 75HP@2300 RPM Water cooled, Turbo charged 4 cylinder Diesel Engine
Operating weight	9,000 Kg
Maximum Gradeability	30% with vibration
Static linear Load (Front Rear)	26.8 Kg/cm 26.8 Kg/cm
Working speed	0 - 9.5 kmph
Travelling speed	0 - 9.5 kmph
Frequency (Low High)	33 Hz 50 Hz
Nominal Amplitude (Low High)	0.4mm 1.0mm
Safety System & Standard accessories	<ul style="list-style-type: none"> • Neutral Start switch • Reverse Buzzer • Air Filter, Hydraulic filter Clog indicator • Auto-Vibration & Sprinkler cut-off • Swinging operator seat for better drum visibility • Tilttable steering • Sprinkler indicator

Features

- High operating weight with Outstanding compaction and Fuel efficient engine
- Highest gradeability in its segment of 45% w/o vibration, ensuring complete compaction on steep terrain
- Tilttable ROC arrangement for ease of serviceability and maintenance
- Low operating & Maintenance cost
- Dual Amplitude with Dual Frequency with Delay relay to avoid sudden impact while switching from one frequency to another

VIBRATORY SOIL COMPACTOR

SPECIFICATIONS



EC 5250

MODEL	10 TON CLASS SOIL COMPACTOR		
	EC 5250 - STD	EC 5250 - DD	EC 5250 - PD
Engine	KOEL, 4R1040 TA-3, 4 Cylinder, Water Cooled, Direct Injection, Turbocharged + Intercooled, 105 HP / 2200 rpm, Mechanical Rotary Pump		
Max. operating weight	10,350 Kg	10,550 Kg	11,950 Kg
Static linear Load	23.7 Kg/cm	24.6 Kg/cm	
Centrifugal force – (Low High)	9,046 Kg 21,492 Kg		
Total applied force– (Low High)	14,096 Kg 26,542 Kg	14,296 Kg 26,742 Kg	15,696 Kg 28,142 Kg
Maximum Gradeability %	40%	55%	55%
Frequency	30 Hz		
Amplitude (Low High)	0.8mm 1.72mm	0.8mm 1.72mm	0.5mm 1.3mm
Safety Features	<ul style="list-style-type: none"> • Neutral Start • Air Filter clog indicator, Hydraulic filter clog indicator • Reverse Buzzer • Over/Long cranking protection • Engine shut-off at High Coolant Temperature & Audio Warning at low lube oil pressure 		

Features

- Highly fuel efficient engine, with high efficiency and low maintenance cost
- Perfect match of frequency and amplitude in vibration leads to Fast rate of Productivity
- Efficient Hydrostatic Transmission
- Highest Operating weight in its segment
- High static linear load, gives more productivity in less no. of passes.
- Better visibility
- Proven reliability & High Performance

EC 5511XP

MODEL	11 TON CLASS SOIL COMPACTOR	
	EC 5511XP – STD	EC 5511 XP - DD
Engine	KOEL, 4R1040 TA-3, 4 Cylinder, Water Cooled, BS III (CEV) Emission Norm 105HP@2200RPM	
Max. operating weight	11,430 Kg	11,630 Kg
Static linear Load	30.9 Kg/cm	31.9 Kg/cm
Centrifugal force – (Low High)	18,898 Kg 27,708 Kg	
Total applied force – (Low High)	25,448 Kg 34,298 Kg	25,648 Kg 34,498 Kg
Maximum Gradeability %	34%	45%
Frequency	33/42 Hz	
Amplitude (Low High)	0.8mm 1.90mm	
Safety Features	<ul style="list-style-type: none"> • Neutral Start • Air Filter clog indicator, Hydraulic filter clog indicator • Reverse Buzzer • Over/Long cranking protection • Engine shut-off at High Coolant temperature • Audio Warning at low lube oil pressure 	

Features

- Highly fuel efficient engine, with high efficiency and low maintenance cost
- Highest Travel speed in the industry Low Turning radius
- Bigger Drum Dia for better compaction
- Higher Operating weight
- High static linear load, gives more productivity in less no. of passes
- Higher Drum size increases better compaction performance with uniform layer of Soil compaction



ENGINEERING THE FUNDAMENTALS OF GROWTH

